

Dutch
—
landscape
architects.

Bampton Pump Track

—
Pump Track Illustrations

1034-SK-01
July 2022

Bampton Pump Track

Pump tracks are growing in popularity because they are an exciting alternative and inclusive play option. They provide a space for all ages and abilities to come together, play and socialise.

The proposals for the pump track and landscape for Bampton have been developed jointly by Forte Trailscapes and Dutch Landscape Architects. The proposals consist of a new tarmac pump track located within the disused ex quarry basin, with spaces for teenage play and space for family and friends to observe the riders from new grassed stepped seating area cut in to the bank of the old pit.

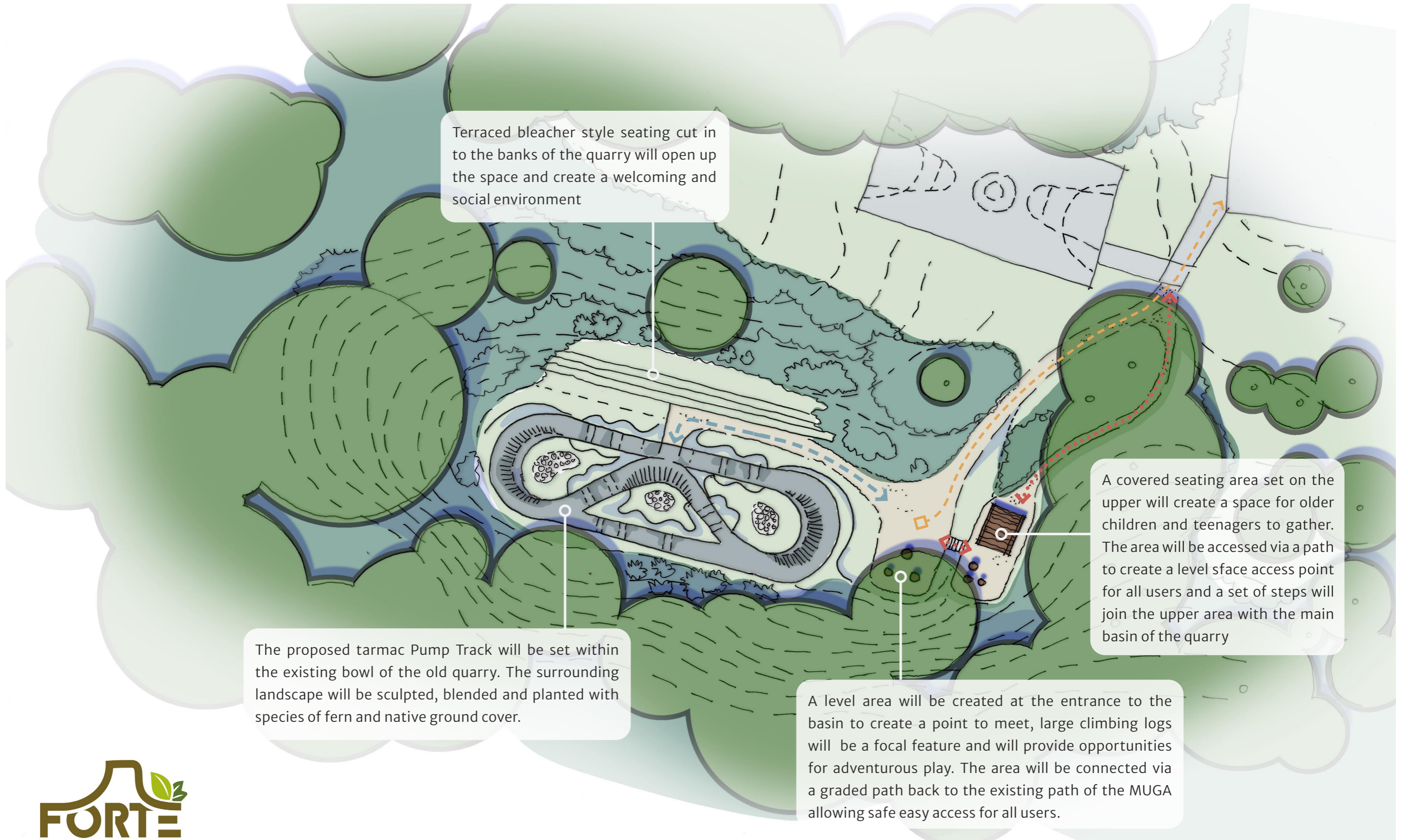
The pump track will be for all abilities and users, including wheelchair users. Access will be via a surfaced foot path linking to the existing MUGA path.

An upper youth social area will also be created on an existing plateau within the pit, this will contain a new youth shelter and seating. This will be accessed by a second path and steps up from the bottom of the basin.

Within the main arrival spaces there will be a collection of climbing logs, these will create a focal feature and a place for adventurous play.



Image taken by Sadie Aldridge – <https://www.instagram.com/sadiealdrige/>



Terraced bleacher style seating cut in to the banks of the quarry will open up the space and create a welcoming and social environment

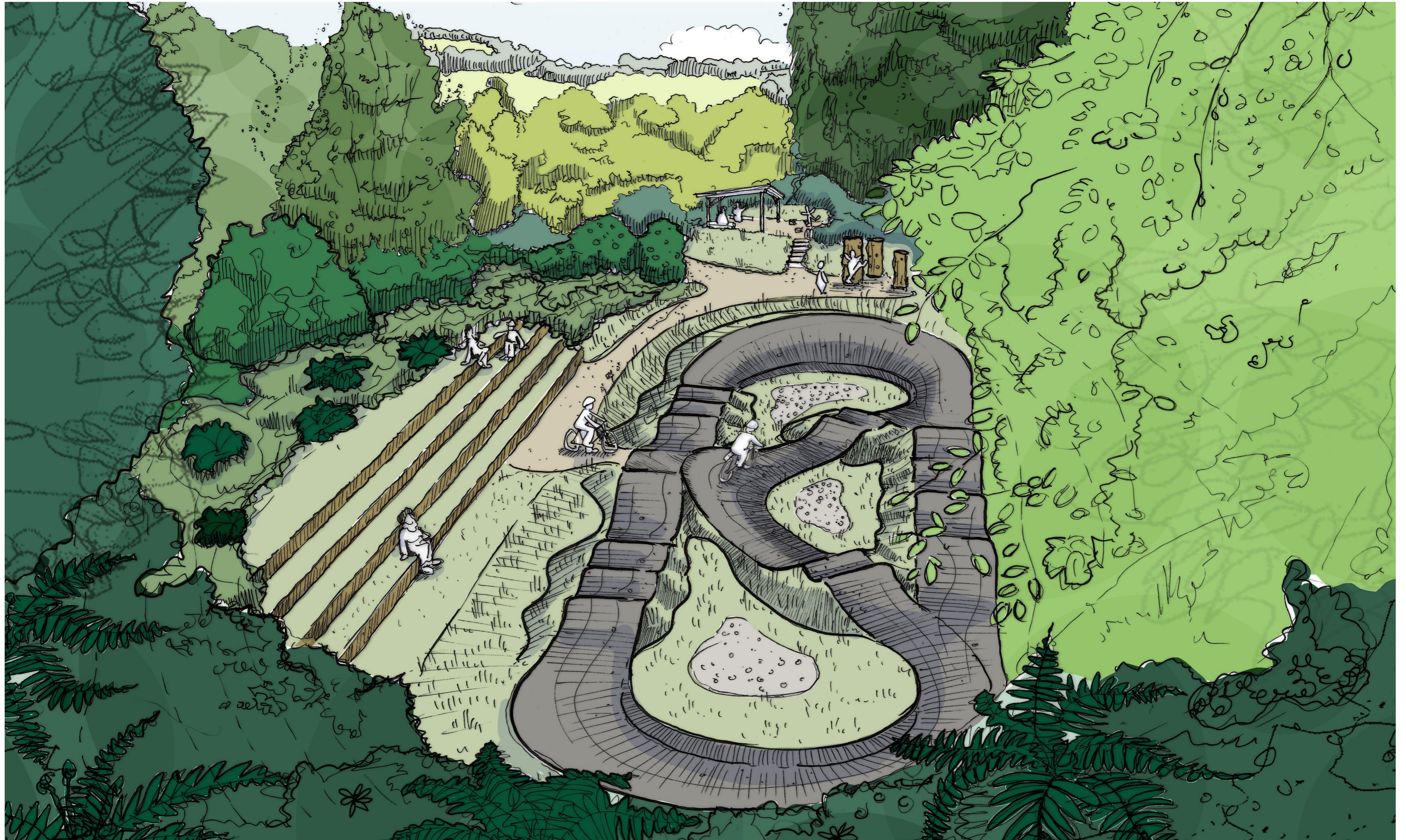
A covered seating area set on the upper will create a space for older children and teenagers to gather. The area will be accessed via a path to create a level sface access point for all users and a set of steps will join the upper area with the main basin of the quarry

The proposed tarmac Pump Track will be set within the existing bowl of the old quarry. The surrounding landscape will be sculpted, blended and planted with species of fern and native ground cover.

A level area will be created at the entrance to the basin to create a point to meet, large climbing logs will be a focal feature and will provide opportunities for adventurous play. The area will be connected via a graded path back to the existing path of the MUGA allowing safe easy access for all users.



Top left: Youth Shelter
Bottom left: Stepped grass seating
Right: Climbing log



Dutch.



M 07875 642352

E design@dutch-la.com

A THE SHED, No 18, Clavering, Saffron Walden, Essex, CB11 4PH

dutch-la.com

